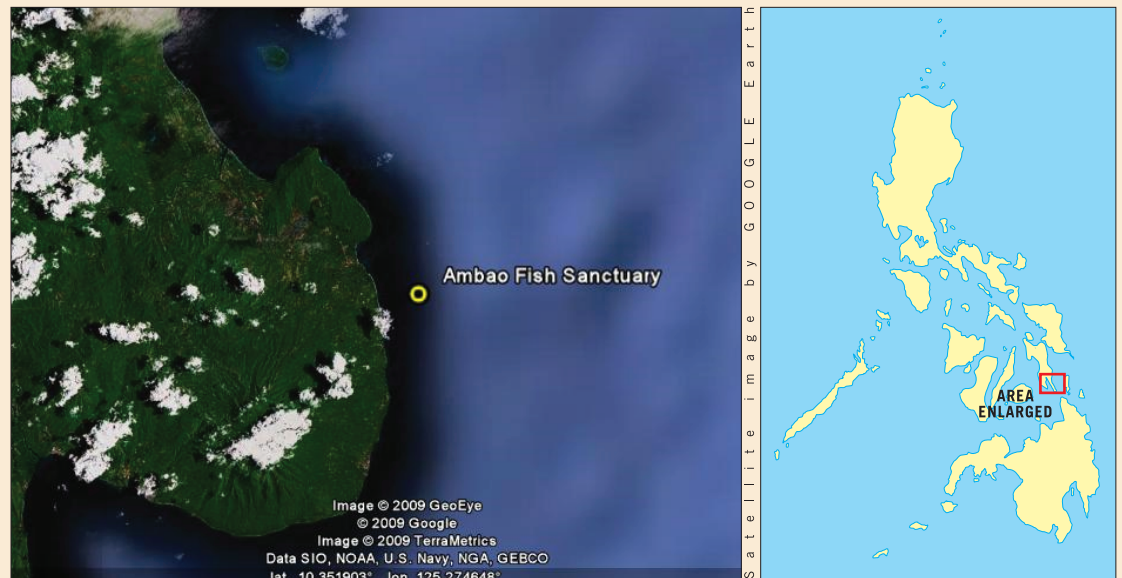


## 2009 Most Outstanding MPA Finalist



### AMBAO FISH SANCTUARY & MARINE RESERVE AREA

Barangay Ambao  
*Hinundayan, Southern Leyte*



#### GEOGRAPHICAL LOCATION

The Ambao Fish Sanctuary & Marine Reserve Area is located in Barangay Ambao, Hinundayan, Southern Leyte in the Island of Leyte which faces South Pacific Seaboard.

#### DESCRIPTION

- Declared a fish sanctuary in April 10, 2000 through Barangay Ordinance No. 01 series of 2000 and later amended by Comprehensive Municipal Fisheries Ordinance No. 2007-65
- 35.2 hectares of “no-take” core area 5 meters of buffer zone on all sides where swimming and other forms of legitimate fishing is allowed beyond this area
- Bordered by Batong Itom on the northern side and Talisay Point on the southern side

#### NOTEWORTHY FLORA AND FAUNA

- Abundance of commercially important fishes like mulmol, mungit, pata, uhawon
- Good coral cover along the near shore

### KEY MANAGEMENT PRACTICES

- Managed by a Fish Sanctuary Management Committee or FSMC
- FSMC is composed of representatives from the fisher folk community, barangay council & employees, OMAS, MFLET members from Barangay Ambao
- Enforcement by community volunteers & FSMC members
- Daytime surveillance by the bantay dagat and kagawad on-duty
- Night time patrolling by shifts of the FSMC members, Barangay council & Barangay volunteers
- Close coordination with MFLET, OMAS and PNP
- Established user fees and fines for violators

### BENEFITS

- Increased abundance of commercially important fishes
- Increased sizes of fishes and fish catch
- Observed recovery of corals and other resources
- Participated in capability trainings, seminars, educational tours useful in MPA management
- The LGU received enforcement facilities like patrol boats, search lights, binoculars, life jackets, megaphone, camera and computers, etc. from GTZ and BFAR.
- Served as pilot area of the Enhancing Management Effectiveness of Marine Protected Areas – through the VSU, Baybay, Leyte & the National Oceanic & Atmospheric Administration (NOAA) through the University of Rhode Island Coastal Resources, USA
- Community volunteers were trained on marine resources assessment
- A recipient of a Bantay Dagat Watch tower through GTZ amounting to almost a million pesos which will soon be constructed along the mid-shore of the MPA.
- The LGU and the barangay have generated income thru fines of violators and recently thru user fees.

### ISSUES & CONCERNS

- Intrusion of “Buso Fishing” from other provinces
- Encroachment of non-registered local fishermen from within & neighboring municipalities
- Use of unlicensed fishing vessels, etc.
- Rough seas during Amihan period hinders tourism potential during this season

### RECOMMENDATIONS

- Promote sustainable financing mechanism through user fees
- Develop the shallow area as a snorkeling site for educational purposes
- Develop potential alternative livelihood for fishers related to ecotourism

