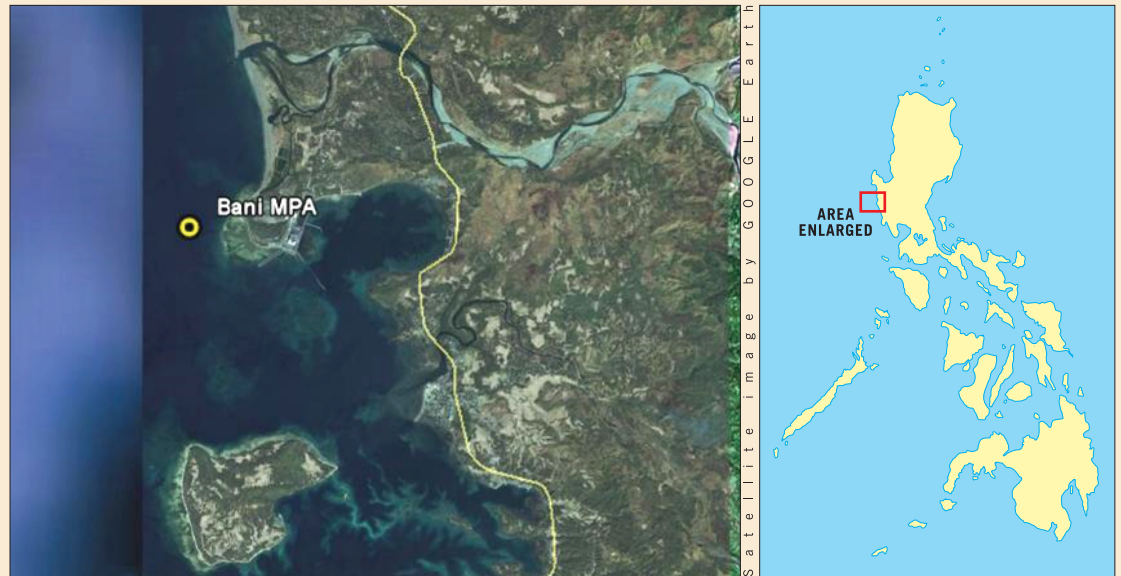


2009 Most Outstanding MPA Finalist



BANI MARINE PROTECTED AREA

Barangay Bani
Masinloc, Zambales



GEOGRAPHICAL LOCATION

Masinloc is located about 250 kilometers northwest of Manila. The Bani Marine Protected Area is located about 8 kilometers northwest from the town proper.

DESCRIPTION

- Established in 2006 through Barangay Ordinance No. 05-06, adopted through Municipal Resolution No. 14-07 and included in the Municipal CRM Code through Municipal Ordinance No. 92-08
- 50 hectares total area; 24 hectares core zone; 26 hectares buffer zone
- Straddles the northern extent of the reef fringing the Bani Pt. on the northern coast of the mouth of Oyon Bay

NOTEWORTHY FLORA AND FAUNA

- Dominated by encrusting, tabulate and the blue coral *Heliopora*. Common genera encountered included *Porites*, *Pachyseris*, *Pectina*, *Galaxea*, *Echinopora*, *Goniastrea* and other *Faviids*
- 52 fish species belonging to 21 families
- Abundant fish families in the area were *Pomacentrids* and *Acanthurids*
- Nesting area for marine turtles

KEY MANAGEMENT PRACTICES

- Management is being done by the Barangay Fisheries and Aquatic Resources Management Council of Bani which is being supervised by the Barangay Council of Bani, advised by the Municipal Government through the Coastal Resources Management Office
- Enforcement team are members of the Federation of Bantay Dagat of Masinloc
- Mooring buoys were installed to clearly delineate the no-take zone thus, facilitating enforcement and awareness
- Management Plan formulated and enacted through Barangay and Municipal Ordinances
- Information drive in the barangay and adjacent barangays in Masinloc and Palauig is being done through community meetings, billboards, and other IEC materials such as calendar and brochures.
- Income generating projects implemented such as beach cottages rentals during summer and selling of novelty items during barangay fiesta.



BENEFITS

- Increase in fish catch
- Increase in fish abundance inside the MPA
- Recovery of corals inside the MPA

ISSUES & CONCERNS

- Poaching of aquarium fish gatherers
- Destruction of marker bouys due to strong waves



RECOMMENDATIONS

- Intensify patrolling by repairing/replacing the old patrol boats
- Design more durable marker buoys and develop a marker buoy maintenance plan/system