



*Parupeneus macronema* 12cm  
Longbarbel goatfish  
saramulyete, timbungan



*Siganus canaliculatus* 13cm  
Rabbitfishes  
samaral, danggit, balawis



*Sardinella fimbriata* 15cm  
Fringescale sardinella  
tamban, tabagak, tuloy



*Alepes djedaba* 19cm  
Cavallas/crevalles  
talakitok, kalapato



*Lethrinus mahsena* 19cm  
Sky emperor  
katambak, kilawan



*Acanthurus lineatus* 21cm  
Lined surgeonfish  
labahita, indangan, mungit

**Legend:**  
Scientific name  
English name  
Local name

This "fish ruler" can be used to do a "quick assessment" of your priority fisheries. Through this you will be able to assess how mature/immature the fishes being sold are. If more than 20% (approx.) of your fish are "immature" it is a good indicator that your fishing resources are in a state of "recruitment overfishing" and there may be problems ahead that will need resolving. (Ideally you would assess the fishery regularly through the whole year, as seasons change). Better law enforcement, closed seasons, a comprehensive CRM code, municipal fishing licensing system and marine sanctuaries are some of the ways to help alleviate the impacts of overfishing.



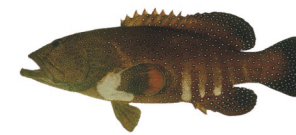
*Gerres oyena* 22cm  
Mojarra  
malakapas, latab, samolok, putihan



*Selar crumenophthalmus* 24cm  
Big-eyed scads  
matangbaka, adlo



*Lutjanus fulvivlamma* 25cm  
Dory snapper  
maya-maya, mangagat, islawan



*Cephalopholis argus* 26cm  
Peacock hind  
lapu-lapu, pugawo



*Epinephelus chlorostigma* 29cm  
Brown spotted grouper  
lapu-lapu, pugawo



*Katsuwonus pelamis* 44cm  
Skipjacks  
gulyasan, budlisan, bolis



## Length at Maturity of Selected Philippine Fishes

