

Stop illegal cutting of mangroves and conversion of mangrove areas into other uses. Reforest denuded areas.

Stop commercial fishing in municipal waters.

Stop the catching of juvenile and spawning fishes. Allow them to grow and reproduce.

Stop the use of illegal and destructive fishing methods and gears.

GO EASY ON THE SEA

**FISH CATCH IS DECLINING!
FISH STOCKS ARE DWINDLING!**

• Studies show that nearshore fish stocks in the Philippines are only 10% of what they were 50 years ago. Excessive and destructive fishing efforts coupled with environmental degradation have resulted in declining fish populations and consequently, fish catch. •

We need fish to make more fish!

For many years now, fish are caught much faster than their natural ability to reproduce. Fisheries biologists recommend that at least 1/3 to 2/3 of the fish populations must be allocated and not harvested for natural replenishment of fish stocks.

What can be done to help maintain viable fish populations and ensure continued food supply from the sea?

Reduce fishing effort at both commercial and municipal levels.

Protect breeding/spawning areas. Establish fishing zones.

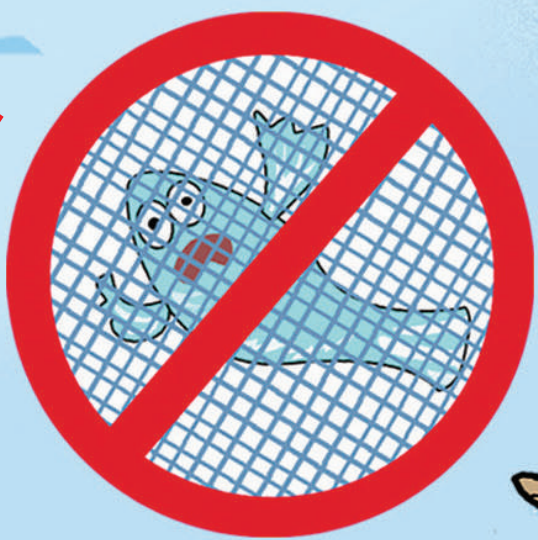


TO CATCH MORE YOU NEED TO FISH LESS!

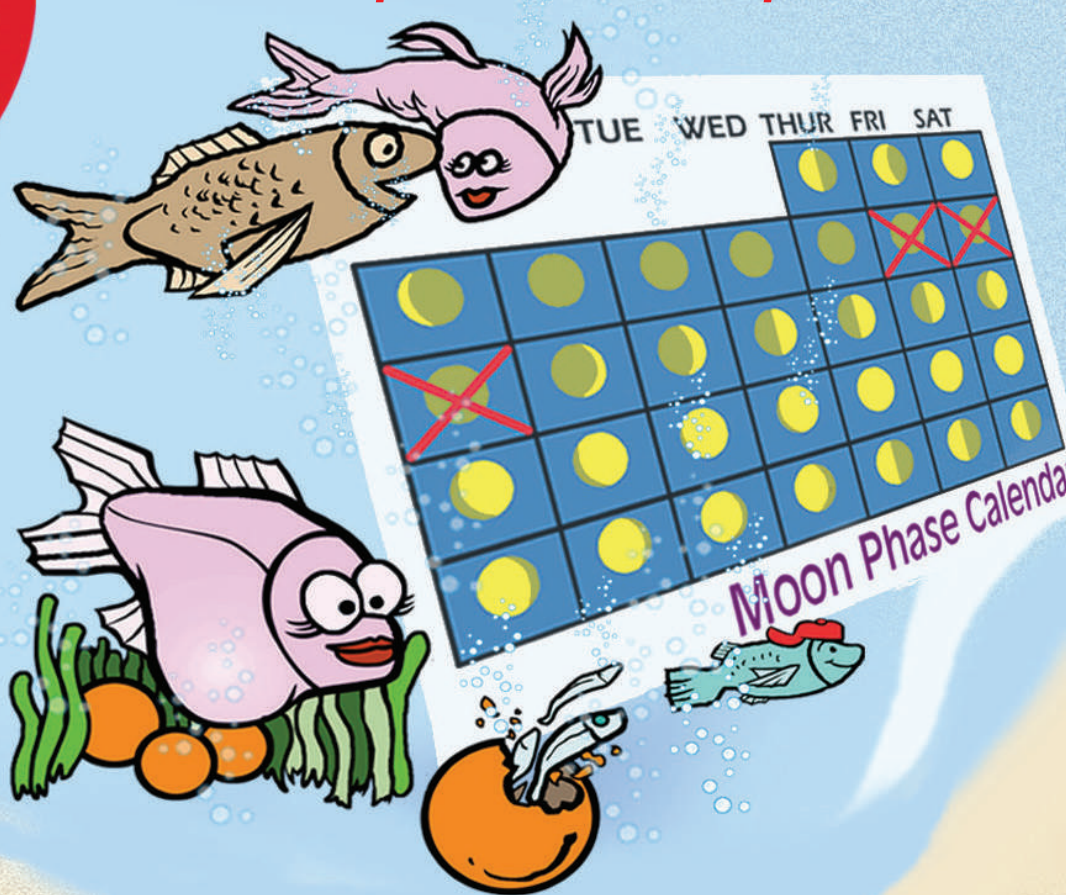


Observe mesh size limits/gear restrictions.

Establish closed seasons to allow fish to spawn and reproduce.



Establish registration and licensing systems.



Enforce fishery laws. Strengthen capacity for management.



MANILA OFFICE 18/F OMM-CITRA Bldg., San Miguel Ave., Ortigas Center, Pasig City Tel. nos: (02) 636-0052 to 53 Fax: (02) 634-0327
CEBU OFFICE 5/F CIFC Towers, J. Luna Ave. cor. J.L. Briones St., NRA, Cebu City Tel. nos.: (032) 232-1821 to 23, 412-0487 to 89 Fax: (032) 232-1825
BOHOL FIELD OFFICE 2/F Robins Home Depot, 40 Palma St., Tagbilaran City, Bohol Tel. no.: (038) 501-7134
NORTHERN PALAWAN FIELD OFFICE 5 Redfern Apartment, Barangay 1, Coron, Palawan Cell. no.: (0918) 906-1319
SURIGAO DEL SUR FIELD OFFICE 3/F EDU Home Bldg., Osmeña St., Tandag, Surigao del Sur Tel. no.: (086) 211-4262
TAWI-TAWI FIELD OFFICE Rachel's Place Hotel and Restaurant Bldg., Ilmoh St., Lamion, Bongao, Tawi-Tawi Tel. no.: (068) 268-1253
FISH@ttemi.com.ph www.oneocean.org fishproject@oneocean.org